

**GZ brandservices**

**Energy  
&  
heating from wood...**

**Water-bearing  
fireplace boiler  
High-performance  
from SKE 15 - SKE 40  
DIN EN 13229**



# Efficiency

## The results is what counts...

From the basement into the living room...

**SKE waterbearing fireplace - the efficient alternative!**

The waterbearing fireplaces „SKE“ are a logical development of the traditional solid fuel boiler with a high water-side efficiency!

(ca. 80% efficiency and 4 - 7% radiating heat).

The heated water is fed into the primary and secondary heating power supplied to the hot water storage.

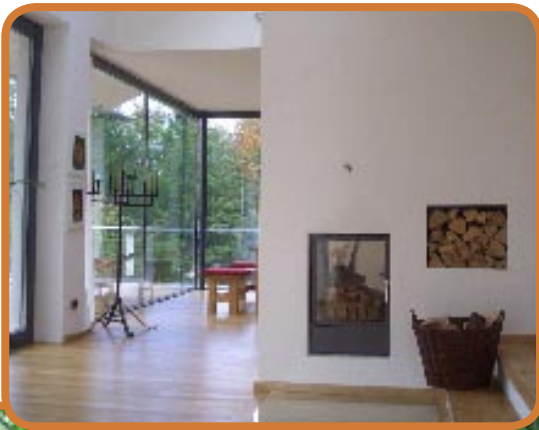
The oil or gas burner is switched off and the entire heating system is heated by a cozy fireside romance. This prevents the living room becomes uncomfortably overheated due to excessive radiation heat.

The waterbearing fireplace „SKE“ acting as an independent combustion plant and can be heated for example at a power of 25 kW, a suitable house in solo mode or to relieve other heating systems are used as secondary heating. Heating with a renewable, CO<sup>2</sup>-neutral raw wood makes you independent from the significant price increases of fossil fuels and gas oil.

All waterbearing fireplaces comply with current regulations emmissions laws, DinPlus-certified and are regularly monitored in the „Rheinuhrfeuerstätten“ test-institute.

Important: Each waterbearing fireplace will produce custom made after order!

**Feel good and your save money...**



## Our waterbearing fireplaces at a glance:

- Comprehensive program of doors, manual production according to customer requirement
- Performance areas: from 15 kW up to 38 kW
- Compliance with all legal standards for DIN EN 13229, BimSchV. 1 & 2, §15a B-VG Norm, VKF-Norm s.o.
- Optimum ratio of the energy splitting even at standard glass. The low proportion of radiation is used to low heat requirements of modern buildings with good insulation.  
(option: NESA-Glass reduce radiating heat up to 35%)
- Efficiency over 80%, pure natural draft chimney
- High volume of water to transport energy with low flow rate
- High proportion of heat exchanger surface for better exchange of energy. Easy access to combustion chamber, easy cleaning!
- No fireclay, combustion chamber 10 years warranty!
- Less easy to remove the ash and ash pan over high-volume.  
The use must not be cooled down.
- Large flue outlet < 250 mm (reduce allowed), more flexibility even at low, flue not height enough or bad.  
(flatroof, bungalow)
- High pressure 3 bar (proofpressure 6 bar), adequate safety margins in the heating system / operation!
- German quality, 100% made in Germany
- Good system maintenance, easily accessible, clean without modification of the combustion chamber. Filter has a self-cleaning effect. If required, the sealing material to simply renew. Door can be easily made and be hooked. Technical components accessible through the access opening.
- Fireplace allows connection to any hydraulic system - whether open gravity system, closed system or passive house standard with air conditioning.  
(Consultation required in order!)
- Near-customer service team, high warranty!
- German manufacturing and testing laboratory, tested according to high German standards!

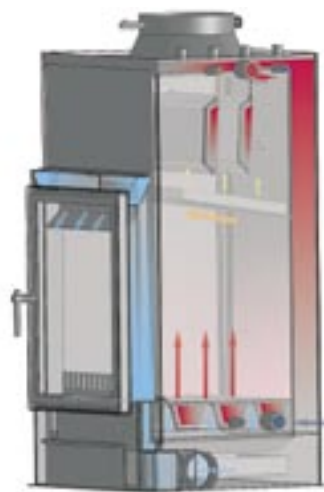
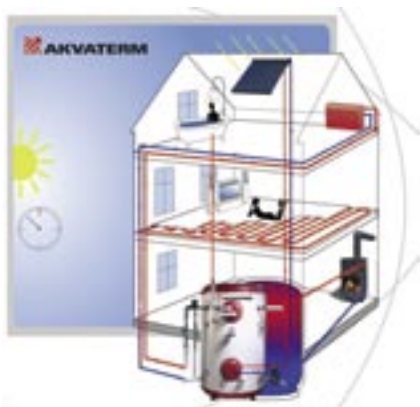
By the manual production process, the customer has a bigger selection and range of each system is tailored to customer specifications. This will provide application materials to the sufficient safety margins for the particular form of production. This also leads out to a customer service over the manufacturing process. Each fireplace is managed through to final blaze.

**This is how the waterbearing fireplace „SKE“ to the immediate value to your house!**



## Hydraulic systems combining solar, heat storage and a woodburning boiler

Whether for newbuild or retrofit creating an integrated heating and hot water system which links in a woodburning boiler stove with solar hot water and a conventional gas or oil boiler is no problem.



Type	SKE 15	SKE 20	SKE 30	SKE 40
	15 kW	20 kW	30 kW	38 kW
Output to water burning wood	13,2 kW	17,3 kW	23,5 kW	25,0 kW
Output to the room burning wood	*2,3 kW	*3,0 kW	*7,3 kW	*13,4 kW
Efficiency (%)	81,8 %	82,9 %	82,4 %	82,0 %
Watervolume (Liter)	120 l	130 l	150 l	220 l
Heating surface	2,25 m <sup>2</sup>	2,58 m <sup>2</sup>	3,46 m <sup>2</sup>	3,95 m <sup>2</sup>
Weight	145 kg	160 kg	210 kg	250 kg
Window (diagonal)	660 mm	730 mm	810 mm	950 mm
Maximum log length (max.)	40 cm	50 cm	70 cm	80 cm

\* option to upgrade to NESAGlass reducing the output to the room by up to 35%!!

Made  
in  
Germany



### GZ-Brandservices Ingo Zehnpfenning

Scheffelstr. 31 - 33  
D-42327 Wuppertal - Germany  
fon +49 (0) 202 / 446 453  
fax +49 (0) 202 / 446 446

info@gz-brandservices.de

Händlerstempel